



VOLUME 15, #1, SPRING 2008


Pathways to Promise

INTERFAITH MINISTRIES AND MENTAL HEALTH

NAMI 2008—Award Highlights

Though some of you attended the NAMI awards presentations, we'd like to highlight a few awards that may be of particular interest to our members.

OUTSTANDING NAMI MEMBER—*Jim and Carol Howe*—The Outstanding NAMI Member Award is the highest honor that NAMI gives to a member of the family, to recognize long and effective work to contribute to NAMI's goal of improving the lives of people with mental illness.

Continued 

- *Mental Illness Awareness Week October 5-11*
- *Schedule a mental health event for your congregation*
- *Renew your Pathways membership*

A WORD FROM YOUR CHAIR BOB DELL

NAMI Conference

As this is written, many readers will have returned from this year's NAMI conference. Participating in the annual NAMI conference continues to be a treasured experience, dating back to the first one Joyce and I attended, Boston, in 1984. Being in the midst of so many friendly, knowledgeable people reduces the feeling of isolation that mental illness can bring. To have access to the latest research, and to experience the openness of those who staff the "Ask the Doc" sessions – these are indeed treasures.

Thanks to Gunnar Christiansen for facilitating the FaithNet display and workshop in which many of us participated; Thanks, also, to Susan Gregg-Schroeder, Craig Rennebohm, and Angie Vickers, for their workshops. Finally, it was gratifying, to have so many stop by the exhibit to learn about Pathways and share what they are trying back home.

Because the NAMI conference has so much to offer, one of the things a congregation could do is to help with scholarship money toward expenses for someone to attend. Registration, travel, or hotel – it adds up, and help would really be appreciated, and what they bring back makes a real difference.

New Book Launch

In April, Jim Zahniser and I had the privilege of a visit to Seattle to spend time with Craig

Rennebohm and the Mental Health Chaplaincy. You can have something of that experience reading Craig's book, *Souls in the Hand of a Tender God*. As mentioned in the interview, page 11, get some people together in your congregation to discuss the book. It is an excellent way to either begin or to further a mental illness ministry.

Proposed Conference

Since the Task Force meeting, April 27th, work has been progressing in planning for the proposed national conference, *Companions on the Road to Recovery from Mental Illness – Pathways for the 21st Century* (working title). Watch the website for updates. Though the challenges remain great, it is most heartening to see congregations and communities rise to meet those challenges (see the PSMIN Florence Kraft award, page 3). The conference will help us pull together, see successful models, have access to resources, and give direction for the years ahead.

Thanks and Best Wishes

Carol Broemmer has been a valued member of the Pathways Board, representing the Lutheran Church Missouri Synod. As she moves on to another position we offer our thanks, Carol, and our best wishes.

Inside this issue:

<i>Network Reports</i>	2
<i>PSMIN Award</i>	3
<i>Membership Updates</i>	4
<i>Consumer Column</i>	5
<i>Bits & Pieces</i>	6
<i>Mark Your Calendar</i>	7
<i>Tell Us About Your Programs</i>	8
<i>Resource Order Form</i>	9
<i>Author Interview Craig Rennebohm</i>	11

Too Much Paper? Get Your Pathways Newsletter via Email

Many of you have indicated that you'd prefer to receive the *Pathways Newsletter* via email. Please visit www.Pathways2Promise.org and click the "E-Newsletter" link. Submit the requested information and when a new issue is published, you will be sent a PDF copy of the current issue. Feel free to take this opportunity to provide any comments, questions, or suggestions—we'd love to hear from you.

Network Reports

Christian Reformed Church of North America

Christian Reformed Disability Concerns releases new book: *A Compassionate Journey: Coming Alongside People with Disabilities or Chronic Illnesses* by John G. Cook

Many people live with chronic illnesses or disabilities, and this number will only grow as the population ages. People who develop long term conditions such as chronic pain or illness, mental illness or another disability, must adjust to major changes in life. Most importantly, they may never "get better" in the usual meaning of that phrase. Their needs and concerns differ greatly from people who experience shorter term health crises, and are not well understood by those responsible for caring ministry in churches. Frequently, with the onset of a disability or chronic illness, the individual loses social support when he or she needs that support all the more. But a close connection to God and to other people frequently helps people with disabilities or illnesses adjust to their impairments and gives their lives new meaning. Co-published by Disability Concerns and Faith Alive Christian Resources, *A Compassionate Journey* offers readers insights into the nature of adjusting to life with a disability or chronic illness, gives a helpful perspective on caring in the face of long-term need, and shows readers ways to be of help. Questions for discussion and a sample workshop are included so that this booklet can be used in a group setting by councils, care teams, Stephen Ministers, in adult education, and other group settings. Visit <http://www.crcna.org/pages/disability.cfm> for additional information.

The Lutheran Network on Mental Illness/Brain Disorders

The Lutheran Church-Missouri Synod's (LCMS) Taskforce on Disabilities has recently developed numerous resources which are available at their website www.lcms.org/disability. This website includes helpful materials on mental illness.

PAGE 2

FaithNet NAMI

The number of people receiving the FaithNet NAMI E-Mail Newsletter now exceeds 9,000. The FaithNet NAMI Web site has had 50,000 visits in the past 12 months and 50 visits each day by new people (www.faithnet.nami.org).

FaithNet reminds you to join the many who participate in the National Day of Prayer for Mental Illness Recovery and Understanding: God's Ministry for Mental Wellness on Tuesday, October 7.

Episcopal Mental Illness Network

Our February 27 "Creating Caring Congregations" workshop was billed as another "stigma busting event." The half-day seminar at Christ Episcopal Church in Little Rock, AR, was scheduled in conjunction with the "Bridging Faithful Spirits and Healthy Minds" conference sponsored by the University of Arkansas for Medical Sciences on the following day. Yolanda Alvarado, the founder/director of the Faith-based Mental Health Initiative in San Antonio, Texas, presented the keynote address entitled Faith-based Ministries: Expanding the Safety Net. The Rev. Bean Murray, EMIN coordinator, led two exercises giving the participants an opportunity to experience stigma first-hand and discuss their reactions. Each participant received a manual with information on mental health resources and practical "how to" projects that congregations can undertake to become more inclusive. The seminar was funded by a grant from the Keller Fund for Mission of the Episcopal Diocese of Arkansas. For more information on the seminar or for a copy of conference materials, contact EMIN at eminnews@msn.com or see the EMIN Web site at emin-news.com.

United Church of Christ Mental Illness Network

Welcome Michelle Hintz and Barbara Baylor our new UCC MIN reps.

If you want to subscribe to the UCC Mental Illness Network e-newsletter, please email Lori at prospectucc@yahoo.com or visit <http://www.min-ucc.org/>

NAMI Awards—Continued

Jim and Carol Howe have been with NAMI since its beginning and have worked steadily for nearly 30 years on the local, state, and national levels to spread NAMI's message that recovery is achievable, and that all people who live with mental illnesses should be treated decently and fairly by our society. Moreover, their contributions to build the infrastructure that makes progress possible and their formidable advocacy and organizational skills are truly hard to measure.

Jane Pauley received NAMI's annual *Rona and Ken Purdy Award* for making a significant, national contribution toward ending stigma and discrimination for her commitment to public education about mental illness and encouragement of consumers and families. She shared her personal story in her book, *Skywriting: A Life Out of the Blue*. Most recently, she served as moderator of the PBS panel discussion of the documentary *Depression: Out of the Shadow*, which was broadcast in May 2008.

Jean Campbell, PhD, received the Lionel Aldridge Award, recognized as an individual consumer for courage, leadership, and service on behalf of all people with mental illness. Dr. Jean Campbell, of the Missouri Institute for Mental Health, has been an innovative thinker, speaker, consumer advocate, and mentor for more than 20 years. Her scholarship in all areas of consumer research will be the source of new ideas and will be cited for many years to come. Her willingness to serve on a broad, national scale (the President's New Freedom Commission; consultant to the Surgeon General's 1999 report on mental health) has been balanced by the personal relationships she has established with individual consumers, her generosity as a mentor, and her creation of many opportunities to educate consumers through research. Her work has been important in its own time and will continue to be important for many years to come.

PATHWAYS TO PROMISE

5400 Arsenal Street
Phone: 314-877-6489
Fax: 314-877-6405

E-mail: Pathways@mimh.edu
www.Pathways2Promise.org

Presbyterian Serious Mental Illness Network (PSMIN)

2008 Florence Iversen Kraft Award

The Florence Iversen Kraft Award honors a congregation that demonstrates outstanding leadership in ministry with persons living with serious mental illness and their families; the award is presented by the Presbyterian Serious Mental Illness Network (PSMIN).

The 2008 award recipient is the First Presbyterian Church of Stillwater, Oklahoma. The Presbytery of Cimarron endorsed the nomination, initiated by the Justice and Reconciliation Committee.

The church has supported the North Central Affiliate of the National Alliance on Mental Illness (NAMI) – Oklahoma Program for the last 12 years by providing space for monthly meetings, a 12-week community health education course and special events and training.

NAMI-North Central credits the church with helping to bring many significant improvements in mental health services for Stillwater and Payne County, including:

- ⌘ Establishment of a Depression and Bi-Polar Support Alliance Group, a Program of Assertive Community Treatment team, a Systems of Care Program, a Children's Mental Health Med Clinic, and a recovery-based adult mental health clubhouse.
- ⌘ Training of city police officers in Community Intervention Training.
- ⌘ With the help of local legislators, secured an increase in patient reimbursement rates for the Edwin Fair Community Mental Health Center.
- ⌘ Encouraged Stillwater Public Library to update its collection of books on serious mental illness.
- ⌘ Assisted the efforts to establish a mental health court in Stillwater and Payne County.

Although mental illness is hidden in most congregations, at First Presbyterian, people are free to say, "I'm bearing this burden of someone who has a mental illness." Even when a family member chooses suicide because of their illness, the pastors are encouraged to openly talk about mental illness during the memorial service. Efforts like these tell worshippers that they are not alone and this is a welcoming, safe place.

First Presbyterian's pastor, B. Gordon Edwards, is a member of the PC(USA) Advisory Committee on Social Witness Policy (ACSWP) bringing the new policy on serious mental illness, "Comfort My People: A Policy Statement on Serious Mental Illness," to the 218th General Assembly (2008). During the years of policy development, the congregation was faithfully involved in the reports that Edwards brought back from these meetings. They engaged in study and research, particularly learning about the inadequacies of services and resources in their own community.

On a Sunday last January, the congregation was dedicating six prayer shawls. After the service, a first-time visitor asked if she could have one. She has Bi-Polar disease and had a bad experience in another church. She had heard that this church would be accepting. She went home with the shawl. Edwards says, "We're trying to overcome stigmas that society breeds into us. We're intentionally trying to make our young people aware of how subtly we carry those. We're trying to do congregation-wide awareness-raising about acceptance."

Congratulations to First Presbyterian of Stillwater for their intentional ministry with persons and families affected by mental illness and their outreach to the community around them.



Mental Health Ministries

Congrats to Susan Gregg-Schroeder. Mental Health Ministries has been awarded a Bronze [Telly Award](#) for their DVD, [Breaking the Silence: Postpartum Depression and Families of Faith](#). Since 1978, Telly's mission has been to strengthen the visual arts community by inspiring, promoting and supporting creativity. The 28th Annual Telly Awards received over 14,000 entries from all 50 states and 5 continents.

We have added a downloadable article to our website on "How Faith Communities can Help Veterans and Their Families Readjust." This article was adapted by VA Chaplain David Lundell and can be found in the Resources and Links section under "Articles" at www.MentalHealthMinistries.net.

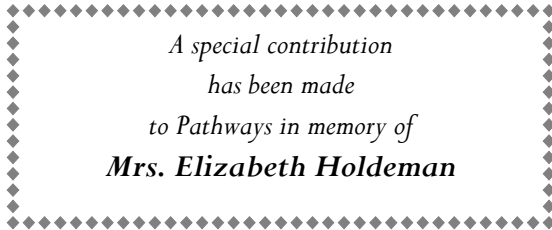
Susan's article, "Seeds of Hope," is in the inaugural issue of *esperanza*, a new magazine on how to cope with anxiety and depression (see page 6).

Membership Updates

Welcome to our new members and thank you to our long time friends for their 2008 renewals.

Individuals

Florence Beaujon
Jan Burggrabe
Kim Cameron
Gunnar Christiansen
Robert Dell
Ken Eshelman
Miriam Haebig
John Holdeman
Christine Howard
Janet Hurst
Jackie Johnson
Christine Kuwahara
Susan Marine
Allan McAllister
Rita Murray
Leroy Pickett
Barbara Outterson
Jack Robertson
Thomas Welch
Gerald Weyrauch



Local & National Groups

American Association of Pastoral Counselors
Christian Reformed Church of North America
Lutheran Church Missouri Synod
General Board of Church & Society,
United Methodist Church
General Board of Global Ministries,
United Methodist Church
Depression Connection Team
First Presbyterian Church, Greensboro, NC
Union Congregational Church UCC, Somonauk, IL
NAMI East Central Minnesota
NAMI Lexington, KY
Prince of Peace Catholic Community
St. Luke's United Church of Christ, Collegeville, PA



Chair Bob Dell and Mennonite Media's Melody Davis sharing a booth at the NAMI convention.



FaithNet NAMI Exhibit - Susan Gregg-Schroeder, Carole Wills, Patti Cooper and Angela Vickers



On the Web...

New Web Resource on Wellness for People with Mental Illnesses

Papers and presentations from the National Wellness Summit for People with Mental Illness are now available at a website hosted by the Center for Psychiatric Rehabilitation. The summit, sponsored by the Center for Mental Health Services, was attended by over 100 experts, meeting to promote wellness and reduce early mortality for people with mental illnesses. These materials, as well as links to other wellness resources, help to address the public health crisis of early mortality - recently estimated up to 25 years life lost - for people with serious mental illnesses. Find out how you can add your name to The Pledge for Wellness, a commitment made by individuals and organizations to promote wellness for people with mental illnesses and to reduce early mortality. Visit the Wellness Summit website at <http://www.bu.edu/cpr/resources/wellness-summit/>. Note: The paper Bob Dell presented on faith communities is available at www.Pathways2Promise.org.

Assistive Technology News - Independence Through Technology (www.atechnews.com) has expanded its news content with assistance from the IDEAL Group, Inc. by adding a link on Autism.

Consumer Column

51 million people suffer from schizophrenia, and over 50% of these will attempt suicide at least once.

Between 10% and 15% will be successful.

Recently released film, *Oil on Water*, illustrates the paranoia of schizophrenia and the effect it has on friends and family. Although the film works as a psychological drama, the directors were careful to make it realistic in the depiction of schizophrenia psychosis to help create awareness and diminish the stigma attached to this illness. The problem is that too often, the illness is hidden due to social stigma. According to one survey in the United States, even after five years of normal living and hard work, an ex-mental patient was rated as less acceptable than an ex-convict. The film is an attempt to heighten awareness of mental illness and quash that stigma. To find out about the film and see the trailer, please go to: www.schizophrenia.co.za. **Watch for upcoming events sponsored by NARSAD and NAMI/Queens.**

Children's Mental Health Coalition Create Bill of Rights

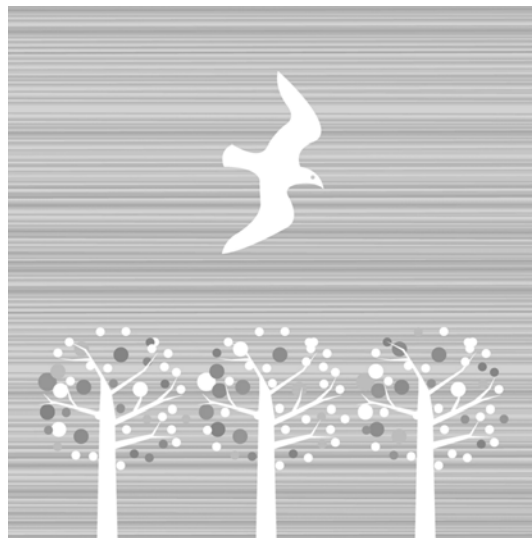
The coalition includes the [American Academy of Child and Adolescent Psychiatry](#) (AACAP), the [Autism Society of America](#) (ASA), the [Child and Adolescent Bipolar Foundation](#) (CABF), [Children and Adults with Attention-Deficit Hyperactivity Disorder](#) (CHADD), the [Federation of Families for Children's Mental Health](#) (FFCMH), [Mental Health America](#) (MHA), and the [National Alliance on Mental Illness](#) (NAMI). "This Bill of Rights represents the standard of what families living with mental illnesses should expect from treatment," said AACAP's President, Robert Hendren, D.O. "Children do better when they receive consistent, tailored treatment. Few children receive any treatment and fewer still receive the sustained, quality care that they require." The Bill of Rights was created because of the inconsistency of accessible mental healthcare services throughout the country.

Schizophrenia: Twice as Common as HIV/AIDS, But Survey Shows Americans Misinformed

Twice as many Americans live with schizophrenia than with HIV/AIDS, but a major report (June, 2008) by the National Alliance on Mental Illness (NAMI) reveals most Americans are unfamiliar with the disease.

"Americans are not sure what to think about schizophrenia," said NAMI executive director Mike Fitzpatrick. "They know schizophrenia is a medical illness affecting the brain, but it is largely misunderstood. There are gaps in knowledge— and access to treatment. Misinformation, misperceptions, and misunderstanding represent a public health crisis."

The new report is available at www.nami.org/schizophreniasurvey. It is based on an on-line survey conducted by Harris Interactive among the general public, caregivers and individuals living with schizophrenia.



Bits & Pieces

Language Matters—The ADS Center Announces Its Name Change

Effective immediately, SAMHSA's Resource Center to Address Discrimination and Stigma has been re-named to SAMHSA's Resource Center to Promote Acceptance, Dignity and, Social Inclusion Associated with Mental Health. The Center will still go by the acronym, the ADS Center. SAMHSA explains, why change the name? Recently, we took a look at our own language use. We asked, "Does using the word 'stigma' lead to stigma?" and questioned whether words like "anti-stigma" have the potential to build a bias, where one did not exist. The ADS Center name change is a result of close inspection and reflection with a spectrum of stakeholders on these tough questions. The ADS Center's new name reflects a new approach: to promote a strengths-based vision, recognizing the importance of a caring, welcoming, and supportive community in helping to promote recovery and wellness for people with mental health problems. Reducing "stigma" will continue to be part of the ADS Center's work but it is no longer enough. We must expand what we do to better serve individuals with mental illnesses and their families. Email stopstigma@samhsa.hhs.gov or visit www.stopstigma.samhsa.gov for information and to join our listserv.

Introducing *ESPERANZA*

From the publisher's of *bp Magazine*, a unique magazine for those living with depression and anxiety, seeking hope, understanding and support. Each issue will focus on the unique needs and wants of an estimated 40 million Americans, and so many others throughout the world, living with anxiety and depression. Visit <http://www.hopetocope.com/default.html>

Children of God and Mental Illness

ELCA Pastor, Hollie M. Holt-Woehl, PhD, published an article in the *Journal of Lutheran Ethics* (July, 2007), describing a research project studying congregations in which people with chronic mental illness were full participants. In the article the author highlights the theological reflections of the research participants along with the author's own theological reflection on the research project and findings. A variety of theological themes, ranging from the priesthood of all believers/body of Christ to Holy Communion as a "Welcome Table" for all people, were suggested as keys to welcoming people with mental illness into congregations. The author further reflects on the theme "Child of God" which emerged from the research and the tension between life in this broken world and life in the healing Spirit of God.

Cultural Competence Survey

The University of Illinois at Chicago (UIC) National Research and Training Center, in partnership with the NAMI STAR Center, is conducting an online survey about cultural competence of consumer-run mental health programs. They hope to learn what peer programs do well and where they struggle in helping people from culturally diverse communities. They are particularly interested in hearing from people in recovery from the African American, Latino, Asian, Native American, and other diverse communities. The

survey will take about 10 to 20 minutes to complete. It is voluntary and anonymous. No one is asked to identify themselves.

PAGE 6

Visit <http://www.cmhsrp.uic.edu/nrtc/survey.asp> to complete the survey. This survey is funded by CMHS/SAMHSA.

BRAIN BONDAGE - The Delay in Mental Illness Recovery

Bipolar lawyer and mother, Angela D. Vickers, JD, CRPS, suffered grave injustices due to the stigma associated with her diagnosis. Her new book, *Brain Bondage*, is the culmination of 10 years of mental health advocacy, targets six professions, and explains how each can end stigma and promote mental wellness and justice. For excerpts and more info visit www.angelavickers.net.

Women and Depression

The National Alliance on Mental Illness (NAMI) has released a new brochure about the many dimensions of major depression in women. It can be downloaded at www.nami.org/womendepression.

Breaking the Silence - Teaching the Next Generation about Mental Illness (BTS) - Free Toolkit Available Online

Lesson plans, games and posters created to break the silence about mental illness in our schools. This nationwide educational program for children is available at www.btslessonplans.org or contact Amy Lax, Director or PR & Development NAMI Queens/Nassau, amy-lax@optonline.net, www.namiqn.org. Amy is exploring grant opportunities which would enable her group to distribute free copies of BTS to faith-based schools nationwide.



Mark Your Calendar

Visit our event calendar at
www.Pathways2Promise.org
 Send your meeting details to
Bob.Dell@ecunet.org

Aug 13—Minneapolis MN. *3rd Annual Ted & Roberta Mann Foundation Symposium About Children & Young Adults with Mental Health & Learning Disabilities*, co-sponsored by PACER Center. Free registration. Visit <http://www.pacer.org/help/symposium/index.asp> or call 952-838-9000

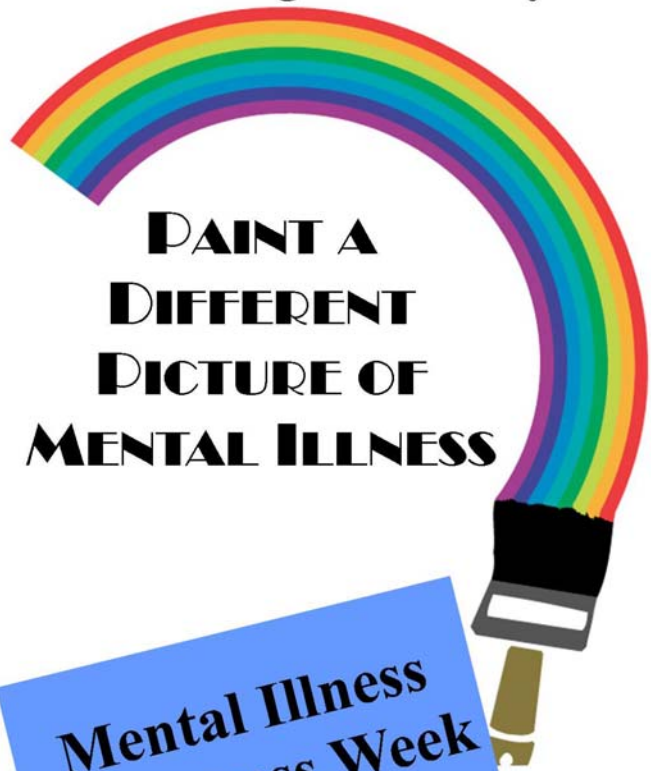
Aug 22-23, 2008—Belleville, IL. *Erase the Stigma of Mental Illness Conference* hosted by The National Shrine of Our Lady of the Snows. Dr. Bryce Sullivan, professor of psychology and dean of the College of Arts and Sciences at Belmont University, and Fr. Joe Nassal, CPPS, Leadership Team for the Kansas City Province Congregation of the Most Precious Blood, will be the keynote speakers. For additional information, visit www.snows.org/erase or contact Judy Williamson at 618-394-6270 or jwilliamson@oblatesusa.org. Look for Jan Burggrabe, P2P Treasurer/Secretary, at the Pathways table.

Sep 10-13—Huntsville, AL. *2008 National Diversity and Interfaith Summit "Globalizing Human Values - Resolving Conflict in a Pluralistic World."* This 3 and 1/2 day summit brings individuals together from across the country for lectures, panel discussions and breakout sessions addressing human values from different faith and cultural perspectives. Program details and registration information at <http://www.interfaithmissionservice.org> or 256-536-2401.

Oct 16-17—St. Louis, MO. *Unleash the Power of Faith: Destroy the Stronghold of Addiction.* Sponsored by Committed Caring Faith Communities (CCFC), Mid-America Addiction Technology Transfer Center and the Mo Department of Mental Health. CCFC's 2008 regional faith-based substance abuse & awards ceremony. Contact CCFC at 314-951-1033 or ccfc.cfc@att.net.

Nov 7-8—Lake Ozark, MO. NAMI-MO Annual Conference at The Resort at Port Arrowhead. Topics include trauma informed care, consumer/family communication, demystifying the teenaged brain, the "new" Medicaid, and much more. Email Cindi Keele at namimoCKJ@aol.com for details or call 800-374-2138.

Our Congregation as a Caring Community



**PAINT A
 DIFFERENT
 PICTURE OF
 MENTAL ILLNESS**

**Mental Illness
 Awareness Week
 October 5-11
 National Day of Prayer
 Tuesday, October 7**

Pathways to Promise
 5400 Arsenal St., St. Louis, MO 63139
 Email Pathways@mimh.edu
 Call 314-877-6489 Fax 314-877-6405

Download this free 8.5x14 color poster at
www.Pathways2Promise.org.

Tell Us About *Your* Programs

A new ministry of **Vera Lloyd Presbyterian Home & Family Services** (www.veralloyd.org), the Laurence Schmidt Center is a counseling center in Little Rock, Arkansas that was specifically designed for pastors/church professionals of all denominations and their families. We offer a variety of services including individual, marital, family and group therapy, as well as various testing and assessment packages, all at affordable prices.

A few years ago, the CEO of Vera Lloyd was approached by a retired pastor about opening a counseling center for clergy. He said that there had been no resources available to him, and he wanted to help insure that no pastor in our area would have the same experience.

Before we opened our doors, we conducted a needs assessment/survey of 500 pastors from five mainline denominations all around the state. What we discovered was that pastors not only experience the same mental and emotional challenges as the general population, but their prevalence rate is about 2-3 times that of the general population especially in the area of depression and anxiety. We also learned that most pastors will not come to counseling, even though they recognize that they need it, because of either finances, confidentiality and/or trust issues. We are working hard to remove those barriers to treatment.

In January of 2007 we opened our doors, and since that time we have seen church conflicts resolved, marriages healed and families find hope for the first time a very long while. We seek to be a spiritual, mental and emotional resource for pastors in whatever capacity it is needed. For more information you can check out our website at www.veralloyd.org/lsc.htm or call the center directly at 501-664-7777
Rev. Rebecca Spooner LAC, director

Recovery Café: Spiritual Nourishment in Seattle—Unlike other homeless or drop-in shelters in Seattle, focuses on the journey of recovery and healing related to mental illness, addiction, trauma and loss. Five days a week, in two-hour, daily sessions, participants can take part in "The School for Recovery." The school, led by clergy members, counselors and volunteers, helps people develop cognitive and self-management skills, while also exploring intimacy and relationship issues. Participants also meet regularly in Recovery Circles, which include meditation, check-ins and sharing, and offer support and accountability as individuals work towards their recovery. Read more about the Recovery Café in the Seattle Post-Intelligencer (http://seattlepi.nwsourc.com/local/363400_faith17.html).

Psychiatry and Spirituality Forum at the University of California, Irvine

The Orange County Register recently profiled Dr. Aaron Kheriaty, M.D., a psychiatrist who has developed a forum to study the role of faith in coping with mental illness. Read more at <http://www.ocregister.com/articles/kheriaty-allen-says-2002942-psychiatry-religious>

Start Your Own IOOV Program

In Our Own Voice (IOOV) is a unique public education program developed by NAMI, in which two trained consumer speakers share compelling personal stories about living with mental illness and achieving recovery. The program was started with a grant from Eli Lilly and Company.

IOOV is an opportunity for those who have struggled with mental illness to gain confidence and to share their individual experiences of recovery and transformation. Throughout the IOOV presentation, audience members are encouraged to offer feedback and ask questions. Audience participation is an important aspect of IOOV because the more audience members become involved, the closer they come to understanding what it is like to live with a mental illness and stay in recovery.

All IOOV presenters must complete a 16 hour NAMI training course. During training, presenters learn to organize the details of their stories, prepare for audience participation and inquiries, and tailor presentations to a variety of groups. Upon completion of the training, presenters are provided a stipend for every presentation they give.

Contact your **state NAMI** to find out where your nearest IOOV program is and other details about training. For more info: http://nami.org/template.cfm?section=In_Our_Own_Voice.

For a complete description of these items please visit www.Pathways2Promise.org

Item (Prices include shipping & handling)	Quantity	Cost	Item Total
Poster: Sunshine from Darkness 11x17		\$2.00	
Poster: Sunshine from Darkness 8.5x11		\$0.50	
Pathways Bookmark		\$0.20	
Mental Illness & Families of Faith Videotape		\$24.00	
Creating Caring Congregations Videotape		\$24.00	
Souls in the Hands of a Tender God: Stories of the Search for Home and Healing on the Streets (C. Rennebohm)		\$12.75	
Caring for the Soul: R'fuat Hanefesh - A Mental Health Resource & Study Guide (R. Address)		\$10.00	
Walking Together: A Training Workshop for Faith Communities Supporting People with Mental Illness		\$10.00	
Pathways to Partnership (Basic Manual) Circle (or # of each): ☒ ____ Christian ☒ ____ Jewish		\$6.75	
Pathways to Understanding Manual (For Instructors & Students)		\$34.00	
Pathways to Understanding Videotape (For use with Manual above)		\$21.75	
Caring Congregations: Observations and Commentary (Overview)		\$6.75	
Worship Resources (A follow-up to Caring Congregations)		\$6.75	
The Bible As A Resource (Materials for sermons and articles)		\$6.75	
It Is Well With My Soul (Scriptures, prayers, & songs for African Americans)		\$4.75	
Who Has Mental Illness? A pamphlet about mental illness, resources & community outreach. Circle (or # of each): ☒ ____ Christian ☒ ____ Jewish		\$0.15	
When Mental Illness Strikes in a Family of Faith (A pamphlet for families and for clergy working with families who have a member who has mental illness) Circle (or # of each):☒ ____ Protestant ☒ ____ Jewish ☒ ____ Roman Catholic		\$0.20	
<u>NEW</u>: Cuando Enfermedades Mentales Impactan A Una Familia De Fe Translated version of When Mental Illness Strikes a Family of Faith		\$0.20	
Total due this page - carry over to next page			

More 

Pathways Resource Order Form

For a complete description of these items please visit www.Pathways2Promise.org

The following BULLETIN INSERTS are available in quantities of 25 only:			
Reaching Out to Someone Who has Mental Illness		\$3.50	
Mental Illness: Community Outreach		\$3.50	
Creating Caring Congregations for People with Mental Illness & Their Families		\$3.50	
Responding to People with Mental Illness in the Congregation and in the Community		\$3.50	
Rabbi Who Sinned? Myths and realities about mental illness		\$3.50	
Children and Mental Disorders: Myths and Facts		\$3.50	
Putting the Pieces Together: Correcting the Myths of Mental Health and Aging Circle (or # of each): <input type="checkbox"/> _____ Christian <input type="checkbox"/> _____ Jewish		\$3.50	
*Sample packet of above 7 inserts for \$2.00		\$2.00	
Amount due for bulletin inserts			
Amount due from previous page			
NOTE: Orders outside the US will incur additional shipping charges		Total Due	

Name: _____

Faith Group, Congregation or Organization: _____

Address: _____

City: _____ State: _____ Zip Code: _____

Telephone: _____ FAX _____ Email: _____

How did you hear about Pathways? Comments?

Complete the form below and mail with your check (sorry no credit cards accepted) made payable to:

Pathways to Promise

5400 Arsenal Street

St. Louis, MO 63139

Attn: Vicki

Questions? Email Pathways@mimh.edu or call 314-877-6489

Souls in the Hands of a Tender God
Stories of the Search for Home and Healing on the Streets

by Craig Rennebohm, D. Min., with David Paul, Ph.D. (Beacon Press, 2008) An Interview with the Authors

Q: What compelled you to write this book?

Craig: I wanted to share something about my experience with spirituality and mental illness and, more importantly, how people of faith can draw on spiritual resources for healing. The book presents stories of encouragement to readers who themselves have suffered from mental illness and to those who support them—their families, friends, and caregivers. I'm also hopeful that the book will encourage clergy and lay leaders of congregations who are willing to take a look at this problem in their midst.

But beyond that, it's a book that can speak to all of us. These are stories of suffering and struggle, of recovery and healing, that speak to the vulnerability of us all. They testify to the infinite tenderness of God and the need for developing caring communities as the basis of peace and well-being in our lives together.

Q: In the book, you write about the “way of companionship.” What is that, and why is it important to people living on the streets with mental illness?

Craig: It's a way of being with another person in support of healing. For example, the book tells the story of Mary, a woman who spent day after day at a busy street corner, huddled behind three large bags, and when anybody came near her she turned away. I began slowly, trying to find a moment when she might be open to exchanging a glance or a smile. It took literally months before she said “hello.” One day she had a book open. I saw that it was a Bible and said, “A good book.” She looked up and smiled. That was the first thread of a relationship. Eventually I was able to have some conversation with her. It took still more time before I gained her trust enough to begin helping her get services, receive treatment, and ultimately get off the street.

According to a study done at a major New York hospital, 80 percent of the homeless people who come into the emergency room critically ill have had no social contact—none—during the two weeks before they come in. Homelessness combined with mental illness makes for a condition that's extremely isolating. I work with folks who are so isolated by their illness that the only way they can connect with services is if somebody comes alongside them and walks with them through the system's complicated processes.

Q: How can congregations engage your book?

Craig: Some congregations are organizing reading circles. They line up six, ten, twenty people, distribute copies of the book, and then come together for an evening's discussion. David developed a simple conversation guide that invites people to talk about what struck them in the book, share experiences in their own lives or with others who have experienced mental illness, and explore together what they might do to take some kind of action individually or in community.

David: At the most fundamental level, this book can raise people's consciousness. Few of us who don't live on the streets have actually gotten to know any of the people we see there. At most we may give them a few coins and walk on, never thinking about them again. Working with Craig on the book has helped me to know some of these people—to remember that they have lives, feelings, and stories of their own. I think it's important for readers to begin to identify with the people they see on the streets.

Craig: I hope the book will encourage congregations to explore some new directions in ministry. And beyond that, at the deepest level, the book is about what it means to be a human being, and how we relate to each other and to God. The experience of working on the streets has helped me discover what is at the heart of God: an infinite gentleness, a profound grace and love—and an invitation to us, no matter who we are or the circumstances of our lives, into an accepting and inclusive community.

As individuals, whenever we see someone who's struggling with depression, bipolar disorder, schizophrenia, or drug or alcohol addiction, rather than turning away, we should realize that this is a fellow human being who is ill. Our responsibility begins with being open to, and sharing the journey with, our brothers and sisters who suffer—becoming companions to them.

Q: What concerns do you have about the state of services and supports for people with mental illness who are living on the streets? Are there any signs of hope?

Craig: Each story in the book is a story of hope. Take the story of Geel, a community in Belgium where, for 700 years, people have taken mentally ill folks into their homes. At first these were folks who were dropped off at the steps of the church, which was a pilgrimage center, in the hope of a miraculous healing. It turned out that a kind of miracle did take place—the real healing of becoming a part of a family again, finding welcome and support within the community. That's the kind of miracle that can happen in *our* communities if we open ourselves to solidarity, companionship, and sharing the journey.

Where I find frustration is that we in this country have not put in place the kinds of mental health services that are needed. We've closed many of the state hospitals and not built the housing that's necessary to get people off the streets and the community-level clinics to treat them. It will take more than individual efforts, or efforts on the part of this or that congregation. It's a matter of community understanding and of public will. It's not an insurmountable task, but it will take action on the community, county, state, and national level.

(Use the Pathways order form to get your copy today.)



Bob Dell & Craig Rennebohm

Pathways to Promise Membership Form

All categories of membership include a subscription to the Pathways to Promise Newsletter

Please check **ONE** of the following membership categories:

Individual - \$25 Congregation - \$50 Other Local Group/Agency - \$50
 Regional Body or Chapter of an Organization - \$150 National Religious Body - \$500*
 Other National Organization/Agency - \$500* Individual Honorary/Lifetime Membership - \$500

**Current Bylaws provide membership in this category includes a seat on the Pathways Board of Representatives.*

Additional Contributions to Pathways are welcome and tax deductible.

\$_____ Gift to Pathways \$_____ Gift to Pathways in Honor or in Memory of _____

Name: _____

Faith Group, Congregation or Organization: _____

Address: _____

City: _____ State: _____ Zip Code: _____

Telephone: _____ FAX _____ Email: _____

Please make checks payable to Pathways to Promise and send with membership form to:

Pathways to Promise, 5400 Arsenal Street, St. Louis, MO 63139

**PATHWAYS TO PROMISE
5400 ARSENAL ST.
ST. LOUIS, MO 63139**

NONPROFIT ORG US POSTAGE PAID ST. LOUIS, MO PERMIT NO 1175

**Renew Your
Membership
TODAY!**